



**ZIP SYSTEM® WALL SHEATHING WITH MECH. ATTACHED DRAINABLE EIFS INSULATION AT SLAB ON GRADE**

**26B**

WALL ASSEMBLY  
MECH. ATTACHED DRAINABLE  
EXTERIOR INSULATED FINISH  
SYSTEM (EIFS)  
ZIP SYSTEM® WALL SHEATHING  
WOOD OR LT. GA. METAL STUDS

TOP EDGE OF STARTER/DRAINAGE  
TRACK TAPED TO ZIP SYSTEM WALL  
SHEATHING SURFACE WITH ZIP  
SYSTEM TAPE OR ADHESIVE BACKED  
FLASHING. (MUST MEET AC148)

STARTER/DRAINAGE  
TRACK WITH WEEP HOLES

FOUNDATION

MECHANICAL FASTENER FOR EIFS  
INSULATION PANELS. QUANTITY,  
TYPE AND SPACING PER EIFS  
MANUF.'S RECOMMENDATIONS

DRAINABLE EIFS INSULATION PANEL.  
DRAINAGE PATH IS PROVIDED BY  
CONTINUOUS VERTICAL CHANNELS IN  
BACK SURFACE OF INSULATION.

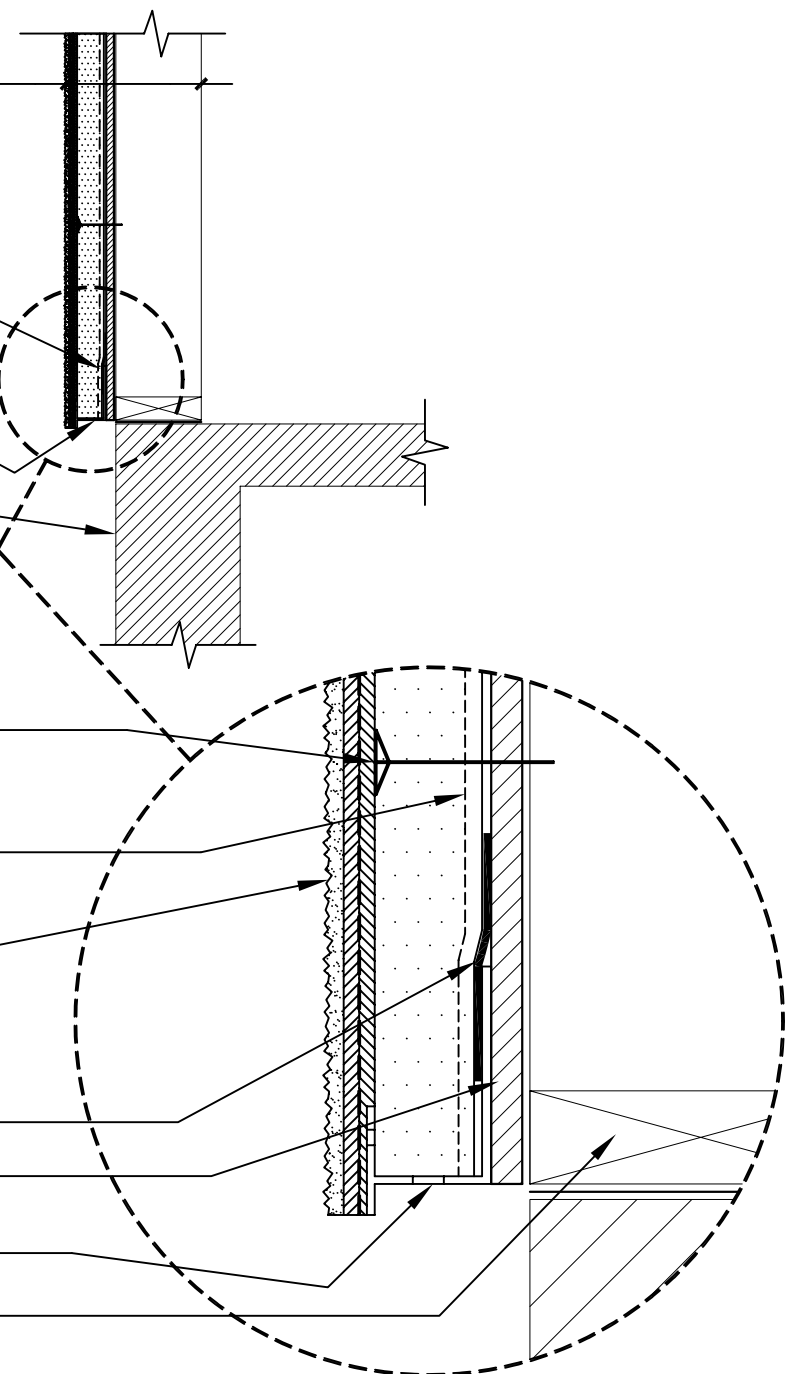
BASE COAT, MESH AND FINISH  
COAT PER EIFS MANUF.'S  
RECOMMENDATIONS

TOP EDGE OF STARTER/DRAINAGE  
TRACK TAPED TO ZIP SYSTEM WALL  
SHEATHING SURFACE WITH ZIP  
SYSTEM TAPE OR ADHESIVE BACKED  
FLASHING. (MUST MEET AC148)

ZIP SYSTEM® WALL SHEATHING

STARTER/DRAINAGE  
TRACK WITH WEEP HOLES

WOOD OR LT. GA. METAL STUDS



DRAWING NOT TO SCALE

12-14-2007

Sales Office: 10925 David Taylor Drive - Suite 300 - Charlotte, NC 28262  
Telephone: 800.933.9220 - Facsimile: 704.547.9228 - www.huberwood.com

*another innovation from*



These construction details are provided to assist in the installation of ZIP System® product(s) and may not apply to every situation. Manufacturer accepts no responsibility or liability for the use of these or other construction details.