

ZIP SYSTEM® WALL SHEATHING
ON WOOD-FRAMED CHIMNEY FLUE

INSTALL ZIP SYSTEM®
TAPE ON ALL JOINTS OF
CHIMNEY CRICKET

LAP ZIP SYSTEM® TAPE OR
ADHESIVE BACKED FLASHING.
(MUST MEET AC148) OVER
TOP OF STEP FLASHING

ASPHALT-FIBERGLASS
SHINGLES

CODE-APPROVED STEP
FLASHING INTERWOVEN WITH
ASPHALT-FIBERGLASS SHINGLES

ZIP SYSTEM® TAPE OR ADHESIVE
BACKED FLASHING (MUST MEET AC148)
INSTALLED AT JOINT BETWEEN ZIP
SYSTEM® WALL AND ROOF SHEATHING*

ZIP SYSTEM® ROOF SHEATHING

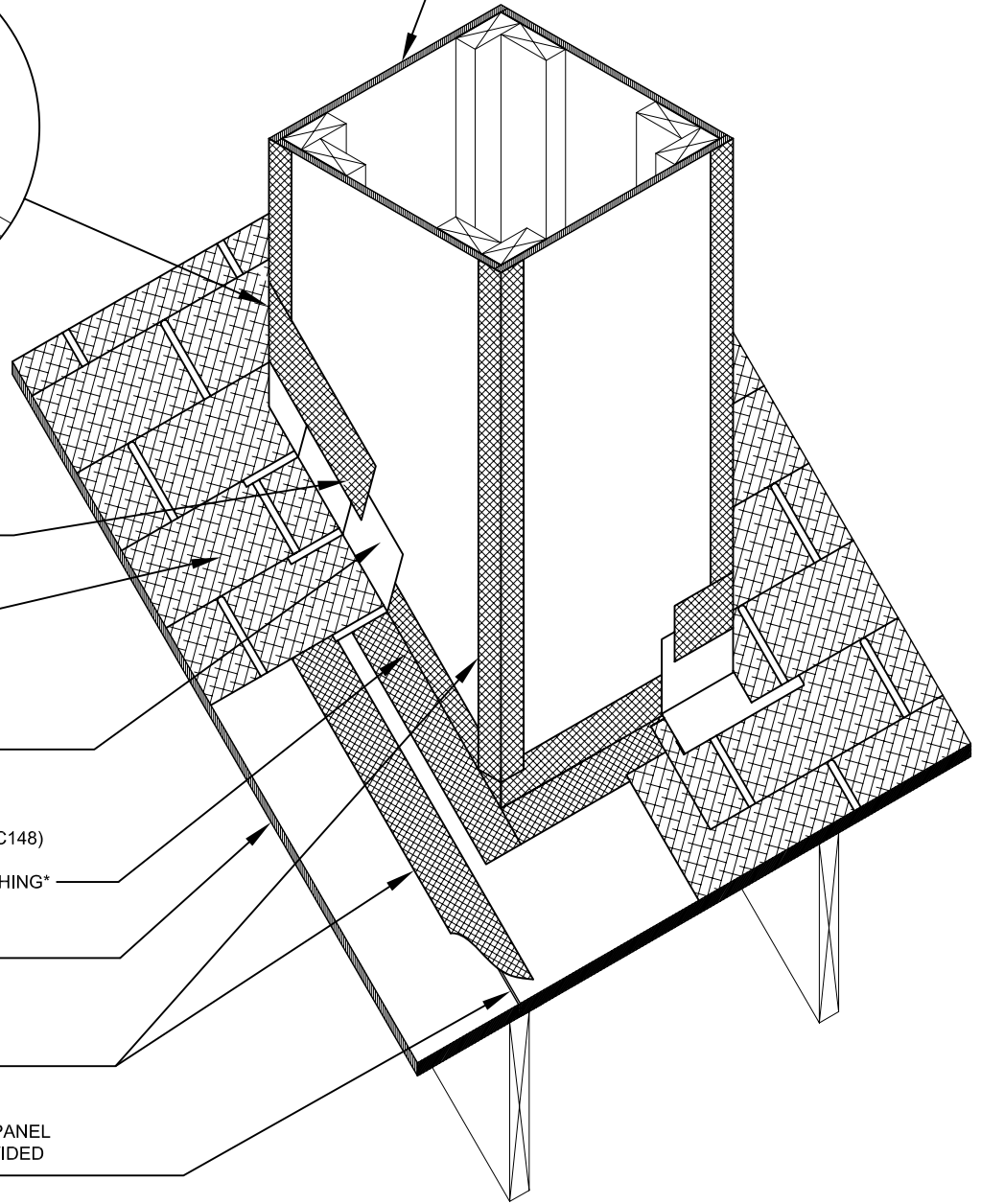
ZIP SYSTEM® TAPE (INSTALLED
OVER ALL JOINTS IN ZIP SYSTEM®
WALL AND ROOF SHEATHING)

1/8-INCH GAP RECOMMENDED AT PANEL
EDGES UNLESS OTHERWISE PROVIDED
BY MACHINED PROFILED EDGES

*ZIP SYSTEM® TAPE ROOF TO WALL CONNECTION OPTIONS:

OPTION 1: ONE STRIP OF 6" WIDE ZIP SYSTEM® TAPE OR ADHESIVE BACKED FLASHING (MUST MEET AC148) WITH 3" ON EITHER SIDE OF JOINT.

OPTION 2: TWO STRIPS OF OVERLAPPING 3.75" WIDE ZIP SYSTEM® TAPE (PLACE FIRST PIECE WITH 1" OVERLAPPING JOINT AND 2.75" ON OPPOSITE FACE - REVERSE FOR SECOND PIECE)



DRAWING NOT TO SCALE