

WALL ASSEMBLY

ZIP SYSTEM® WALL SHEATHING
WOOD OR LT. GA. METAL STUDS

TOP EDGE OF FLASHING TAPED TO WALL SHEATHING WITH ZIP SYSTEM® TAPE OR ADHESIVE BACKED FLASHING. (MUST MEET AC148)

1/8-INCH GAP RECOMMENDED AT PANEL EDGES UNLESS OTHERWISE PROVIDED BY MACHINED PROFILED EDGES

ASPHALT-FIBERGLASS SHINGLES

STEP FLASHING INTERWOVEN WITH ASPHALT-FIBERGLASS SHINGLES

ZIP SYSTEM® TAPE OR ADHESIVE BACKED FLASHING (MUST MEET AC148) INSTALLED AT JOINT BETWEEN ZIP SYSTEM® WALL AND ROOF SHEATHING*

ZIP SYSTEM® ROOF SHEATHING).

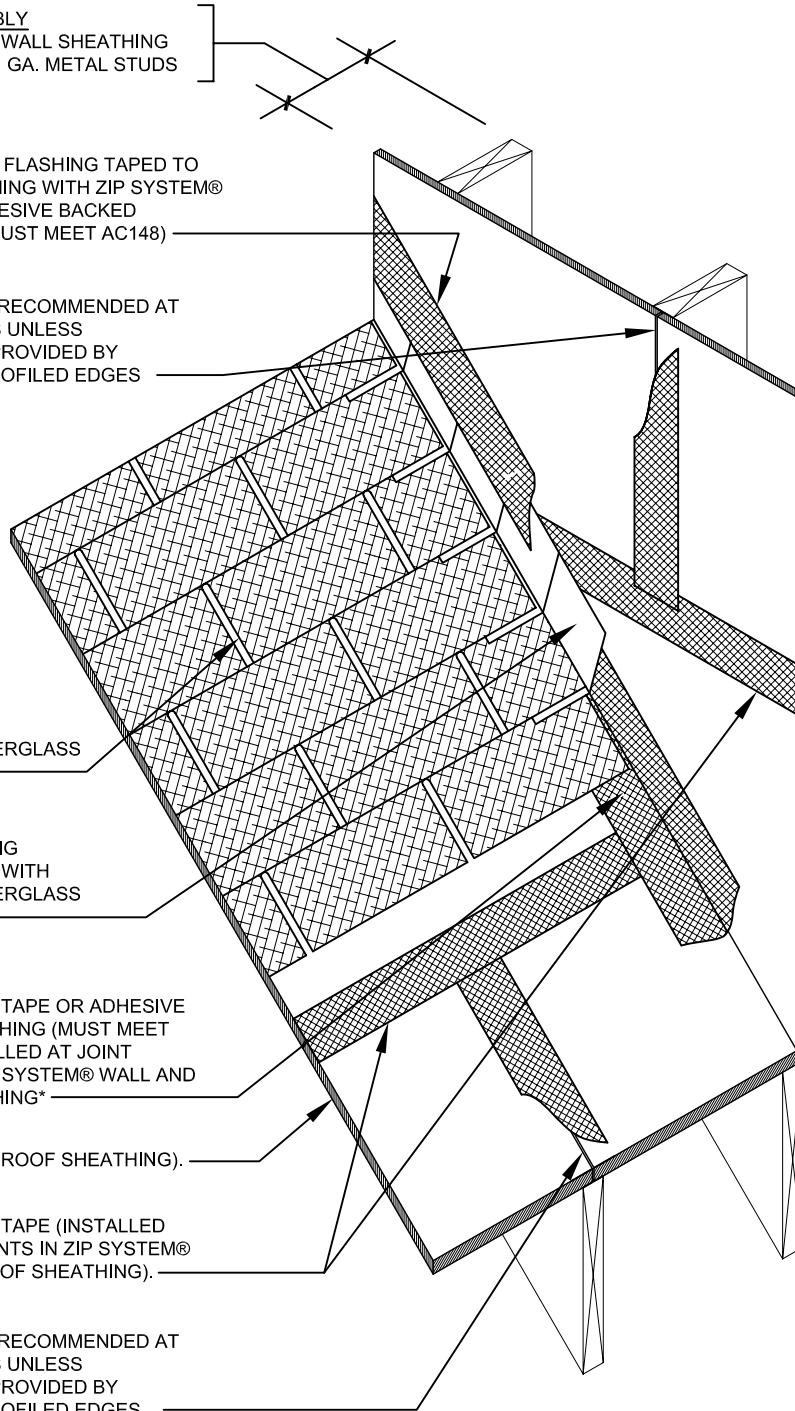
ZIP SYSTEM® TAPE (INSTALLED OVER ALL JOINTS IN ZIP SYSTEM® WALL AND ROOF SHEATHING).

1/8-INCH GAP RECOMMENDED AT PANEL EDGES UNLESS OTHERWISE PROVIDED BY MACHINED PROFILED EDGES

*ZIP SYSTEM® TAPE ROOF TO WALL CONNECTION OPTIONS:

OPTION 1: ONE STRIP OF 6" WIDE ZIP SYSTEM® TAPE OR ADHESIVE BACKED FLASHING (MUST MEET AC148) WITH 3" ON EITHER SIDE OF JOINT.

OPTION 2: TWO STRIPS OF OVERLAPPING 3.75" WIDE ZIP SYSTEM® TAPE (PLACE FIRST PIECE WITH 1" OVERLAPPING JOINT AND 2.75" ON OPPOSITE FACE - REVERSE FOR SECOND PIECE)



DRAWING NOT TO SCALE