



**ZIP SYSTEM® WALL SHEATHING WITH VINYL / WOOD / FIBER CEMENT TO
STANDARD ROOF SHEATHING WITH SHINGLE ROOF COVERING BELOW**

09A

WALL ASSEMBLY

VINYL/WOOD/FIBER CEMENT SIDING (INSTALLED IN ACCORDANCE WITH CLADDING MANUFACTURER'S INSTALLATION RECOMMENDATIONS)
ZIP SYSTEM® WALL SHEATHING
WOOD OR LIGHT GAUGE METAL STUDS

TOP EDGE OF FLASHING TAPED TO WALL SHEATHING WITH ZIP SYSTEM® TAPE OR ADHESIVE BACKED FLASHING. (MUST MEET AC148)

ADHESIVE BACKED FLASHING RECOMMENDED (MUST MEET AC148)

CODE APPROVED FLASHING

ROOF ASSEMBLY

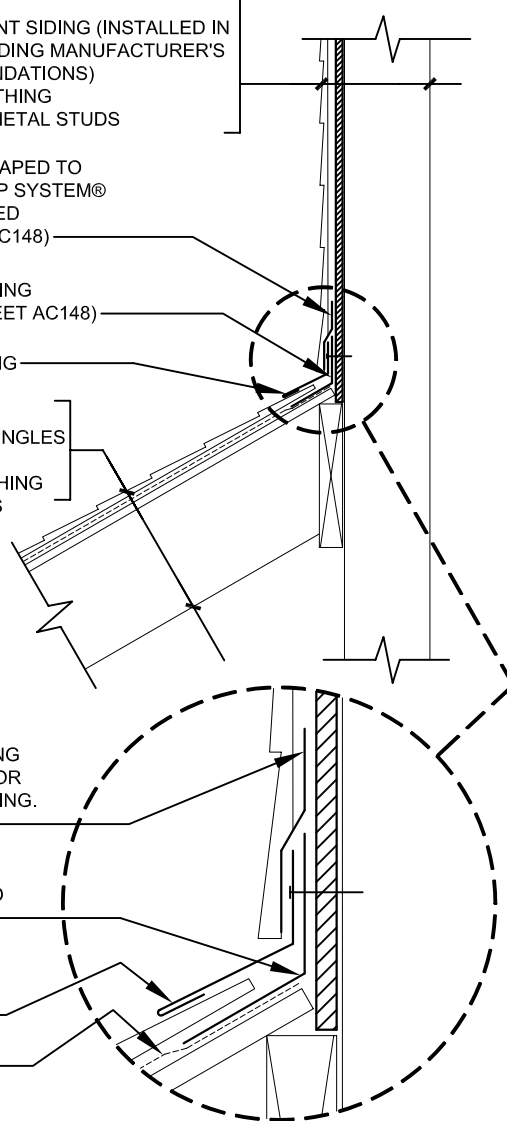
ASPHALT-FIBERGLASS SHINGLES
ROOF UNDERLAYMENT
PLYWOOD OR OSB SHEATHING
ROOF TRUSS OR RAFTERS

TOP EDGE OF FLASHING TAPED TO WALL SHEATHING WITH ZIP SYSTEM® TAPE OR ADHESIVE BACKED FLASHING. (MUST MEET AC148)

ADHESIVE BACKED FLASHING RECOMMENDED (MUST MEET AC148)

CODE APPROVED FLASHING LAPPED OVER ROOF SHINGLES

ROOF UNDERLAYMENT



DRAWING NOT TO SCALE

12-14-2007

Sales Office: 10925 David Taylor Drive - Suite 300 - Charlotte, NC 28262
Telephone: 800.933.9220 - Facsimile: 704.547.9228 - www.huberwood.com

another innovation from



**ENGINEERED
WOODS**

These construction details are provided to assist in the installation of ZIP System® product(s) and may not apply to every situation. Manufacturer accepts no responsibility or liability for the use of these or other construction details.