



# ZIP SYSTEM® WALL SHEATHING TRANSITION TO EXTERIOR DECK WITH LW CONCRETE TOPPING

06A

WALL ASSEMBLY  
VINYL/WOOD/FIBER CEMENT SIDING  
(INSTALLED IN ACCORDANCE WITH  
CLADDING MANUFACTURER'S  
INSTALLATION RECOMMENDATIONS)  
ZIP SYSTEM® WALL SHEATHING  
WOOD OR LT. GA. METAL STUDS

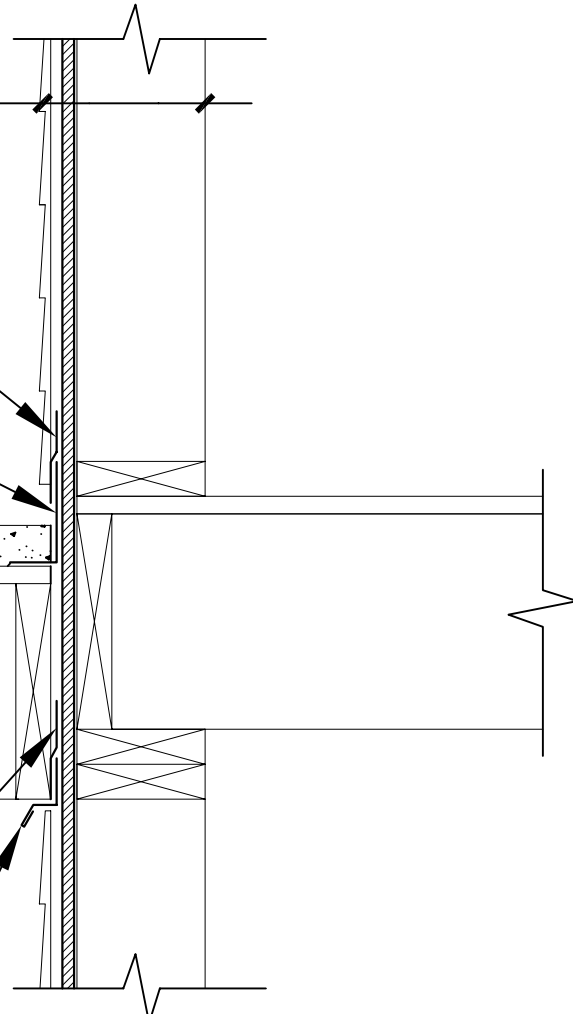
TOP EDGE OF FLASHING TAPED TO  
WALL SHEATHING WITH ZIP SYSTEM®  
TAPE OR ADHESIVE BACKED  
FLASHING. (MUST MEET AC148)

CODE APPROVED FLASHING AT  
CONC. DECK TO WALL TRANSITION

CONCRETE TOPPING ON  
WOOD STRUCTURAL  
DECK. FLASHING AND  
WATERPROOFING TO BE  
DESIGNED BY OTHERS

TOP EDGE OF FLASHING  
TAPED TO WALL SHEATHING  
WITH ZIP SYSTEM® TAPE OR  
ADHESIVE BACKED FLASHING.  
(MUST MEET AC148)

CODE APPROVED FLASHING



DRAWING NOT TO SCALE

12-14-2007

Sales Office: 10925 David Taylor Drive - Suite 300 - Charlotte, NC 28262  
Telephone: 800.933.9220 - Facsimile: 704.547.9228 - www.huberwood.com

another innovation from



ENGINEERED  
WOODS

These construction details are provided to assist in the installation of ZIP System® product(s) and may not apply to every situation. Manufacturer accepts no responsibility or liability for the use of these or other construction details.