



# ZIP SYSTEM® WALL SHEATHING WITH BRICK VENEER AT FOUNDATION TRANSITION

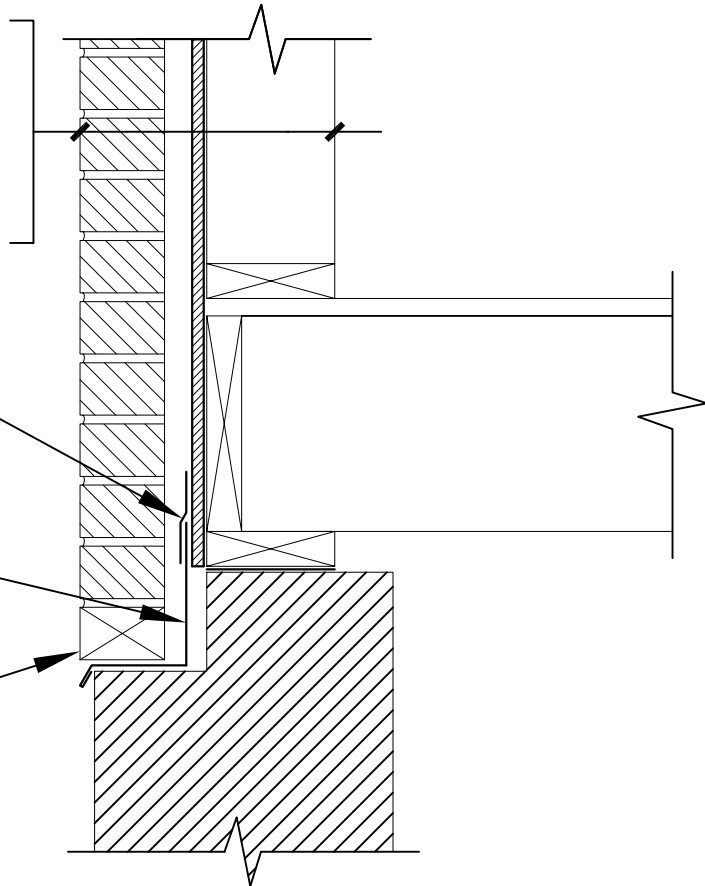
03B

WALL ASSEMBLY  
BRICK VENEER  
AIR SPACE (AS PRESCRIBED BY  
LOCAL BUILDING CODE)  
ZIP SYSTEM® WALL SHEATHING  
WOOD OR LT. GA. METAL STUDS

TOP EDGE OF FLASHING TAPED  
WITH ZIP SYSTEM® TAPE OR  
ADHESIVE BACKED FLASHING.  
(MUST MEET AC148)

CODE APPROVED BASE  
FLASHING

WEEP HOLES (AS PRESCRIBED  
BY LOCAL BUILDING CODE)



DRAWING NOT TO SCALE

12-14-2007

Sales Office: 10925 David Taylor Drive - Suite 300 - Charlotte, NC 28262  
Telephone: 800.933.9220 - Facsimile: 704.547.9228 - www.huberwood.com

another innovation from



ENGINEERED  
WOODS

These construction details are provided to assist in the installation of ZIP System® product(s) and may not apply to every situation. Manufacturer accepts no responsibility or liability for the use of these or other construction details.