



ZIP SYSTEM® WALL SHEATHING WITH BRICK VENEER AT SLAB ON GRADE CONSTRUCTION

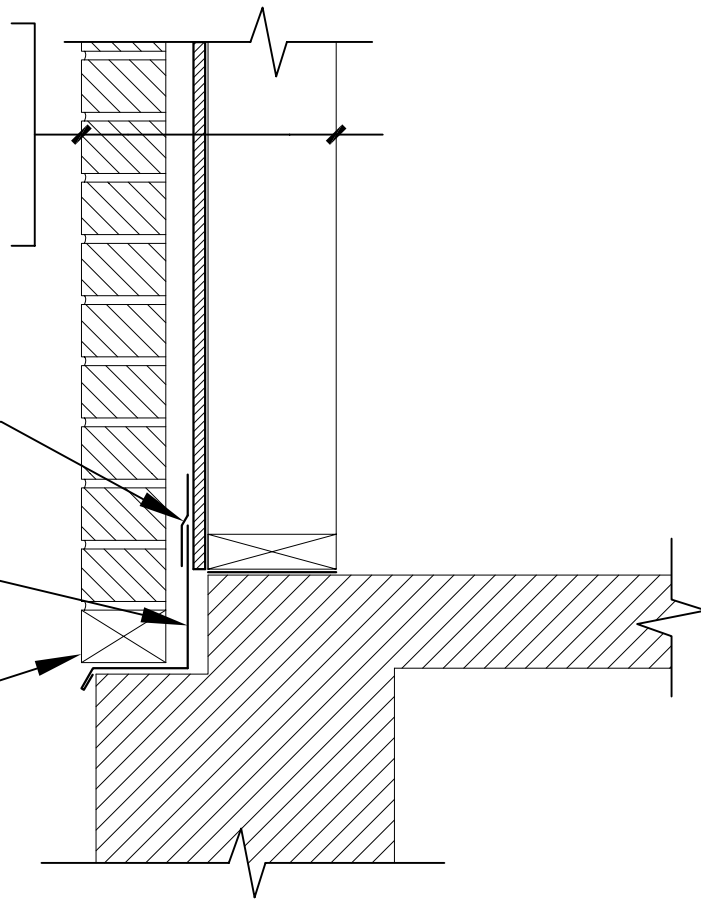
02B

WALL ASSEMBLY
BRICK VENEER
AIR SPACE (AS PRESCRIBED BY
LOCAL BUILDING CODE)
ZIP SYSTEM® WALL SHEATHING
WOOD OR LT. GA. METAL STUDS

TOP EDGE OF FLASHING TAPED
WITH ZIP SYSTEM® TAPE OR
ADHESIVE BACKED FLASHING.
(MUST MEET AC148)

CODE APPROVED BASE
FLASHING

WEEP HOLES (AS PRESCRIBED
BY LOCAL BUILDING CODE)



DRAWING NOT TO SCALE

12-14-2007

Sales Office: 10925 David Taylor Drive - Suite 300 - Charlotte, NC 28262
Telephone: 800.933.9220 - Facsimile: 704.547.9228 - www.huberwood.com

another innovation from



ENGINEERED
WOODS

These construction details are provided to assist in the installation of ZIP System® product(s) and may not apply to every situation. Manufacturer accepts no responsibility or liability for the use of these or other construction details.